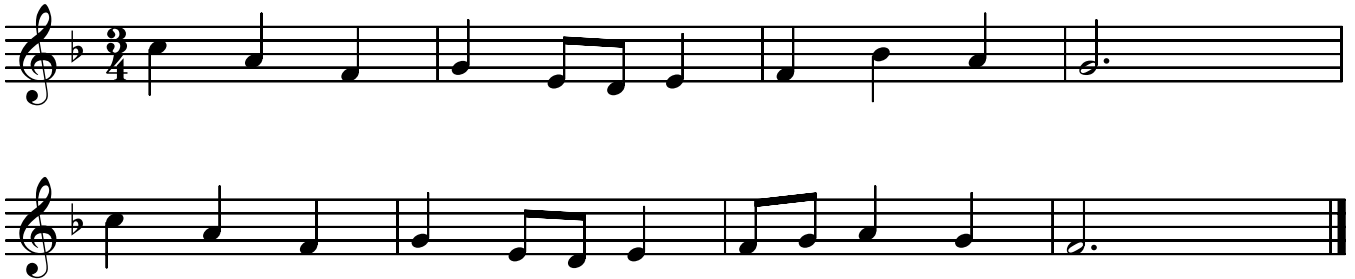


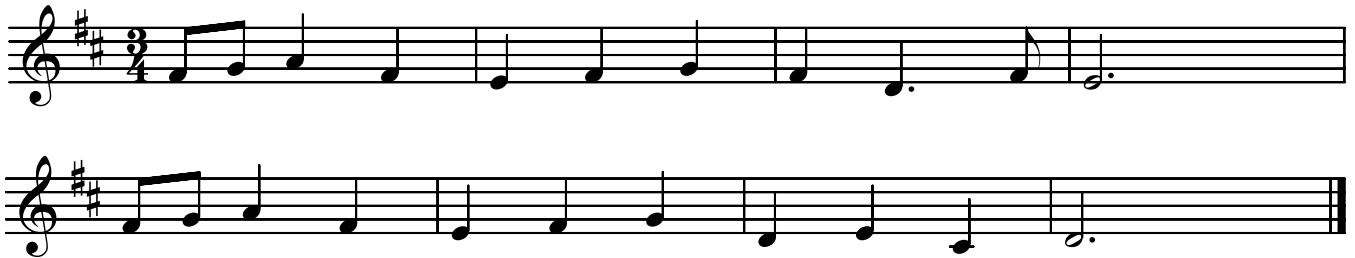
# CLUASTRIALACHA CUIMHNE (AL) / AURAL MEMORY TESTS (HL)

## RITHIM / RHYTHM

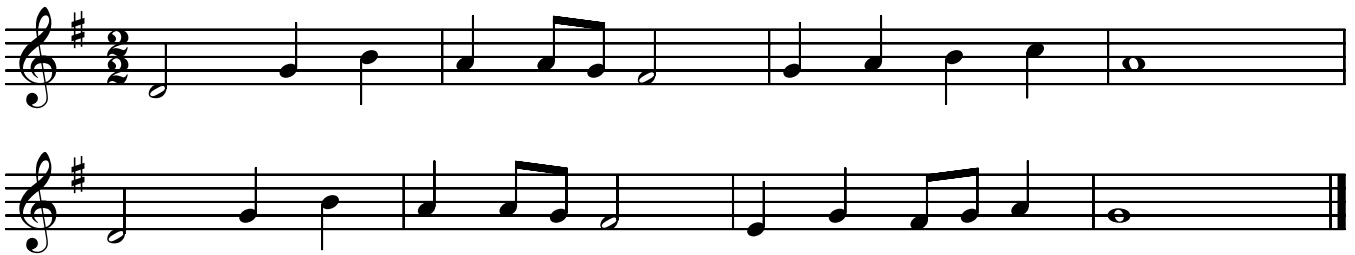
1.



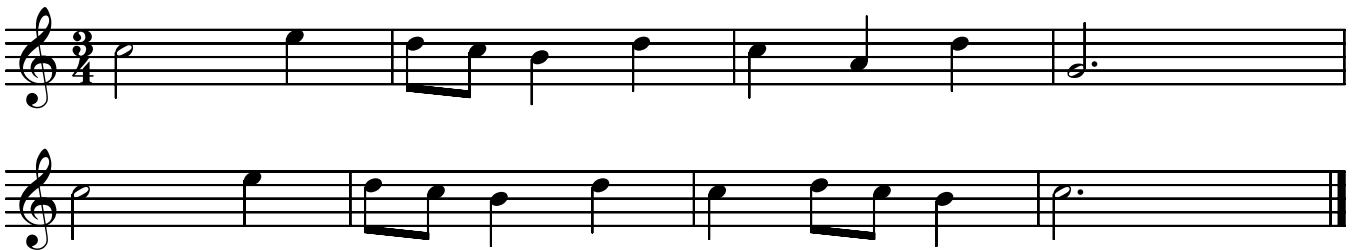
2.



3.



4.



5.

Exercise 5 is written in 3/2 time with a key signature of two flats (B-flat and E-flat). The first staff contains the following notes: G4, A4, B-flat4, A4, G4, F4, E-flat4, D4, C4. The second staff contains: G4, A4, B-flat4, A4, G4, F4, E-flat4, D4, C4, B-flat4, A4, G4, F4, E-flat4, D4, C4. The piece concludes with a double bar line.

6.

Exercise 6 is written in 3/2 time with a key signature of one flat (B-flat). The first staff contains the following notes: G4, A4, B-flat4, A4, G4, F4, E-flat4, D4, C4. The second staff contains: G4, A4, B-flat4, A4, G4, F4, E-flat4, D4, C4, B-flat4, A4, G4, F4, E-flat4, D4, C4. The piece concludes with a double bar line.

7.

Exercise 7 is written in 3/4 time with a key signature of two sharps (F# and C#). The first staff contains the following notes: G4, A4, B4, A4, G4, F#4, E4, D4, C4. The second staff contains: G4, A4, B4, A4, G4, F#4, E4, D4, C4, B4, A4, G4, F#4, E4, D4, C4. The piece concludes with a double bar line.

8.

Exercise 8 is written in 3/4 time with a key signature of one sharp (F#). The first staff contains the following notes: G4, A4, B4, A4, G4, F#4, E4, D4, C4. The second staff contains: G4, A4, B4, A4, G4, F#4, E4, D4, C4, B4, A4, G4, F#4, E4, D4, C4. The piece concludes with a double bar line.

9.

Exercise 9 consists of two staves of music in 3/2 time with a key signature of one flat (B-flat). The first staff begins with a treble clef, a key signature of one flat, and a 3/2 time signature. The melody starts on a half note G4, followed by quarter notes A4, Bb4, and C5. The second staff continues the melody with quarter notes D5, E5, F5, and G5, ending with a double bar line.

10.

Exercise 10 consists of two staves of music in 3/4 time with a key signature of one flat (B-flat). The first staff begins with a treble clef, a key signature of one flat, and a 3/4 time signature. The melody starts on a quarter note G4, followed by quarter notes A4, Bb4, and C5. The second staff continues the melody with quarter notes D5, E5, F5, and G5, ending with a double bar line.

11.

Exercise 11 consists of two staves of music in 3/2 time with a key signature of two flats (B-flat and E-flat). The first staff begins with a treble clef, a key signature of two flats, and a 3/2 time signature. The melody starts on a half note G4, followed by quarter notes A4, Bb4, and C5. The second staff continues the melody with quarter notes D5, E5, F5, and G5, ending with a double bar line.

12.

Exercise 12 consists of two staves of music in 3/4 time with a key signature of one sharp (F-sharp). The first staff begins with a treble clef, a key signature of one sharp, and a 3/4 time signature. The melody starts on a quarter note G4, followed by quarter notes A4, B4, and C5. The second staff continues the melody with quarter notes D5, E5, F5, and G5, ending with a double bar line.